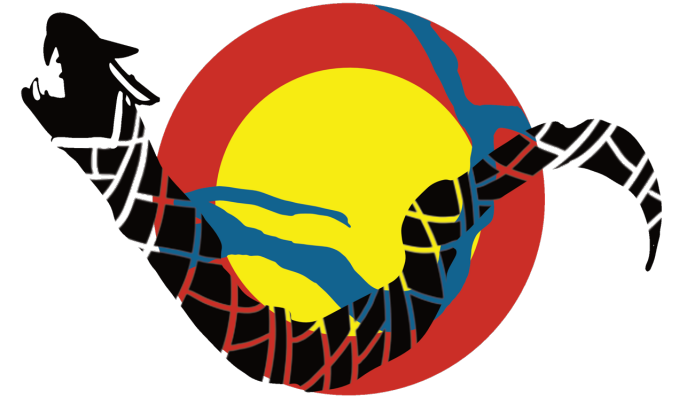


# The Martuwarra Fitzroy River Council's Climate Adaptation Strategy

## SESSION 4

*The Contribution of Museums to Water Governance  
in tackling Climate Change.*

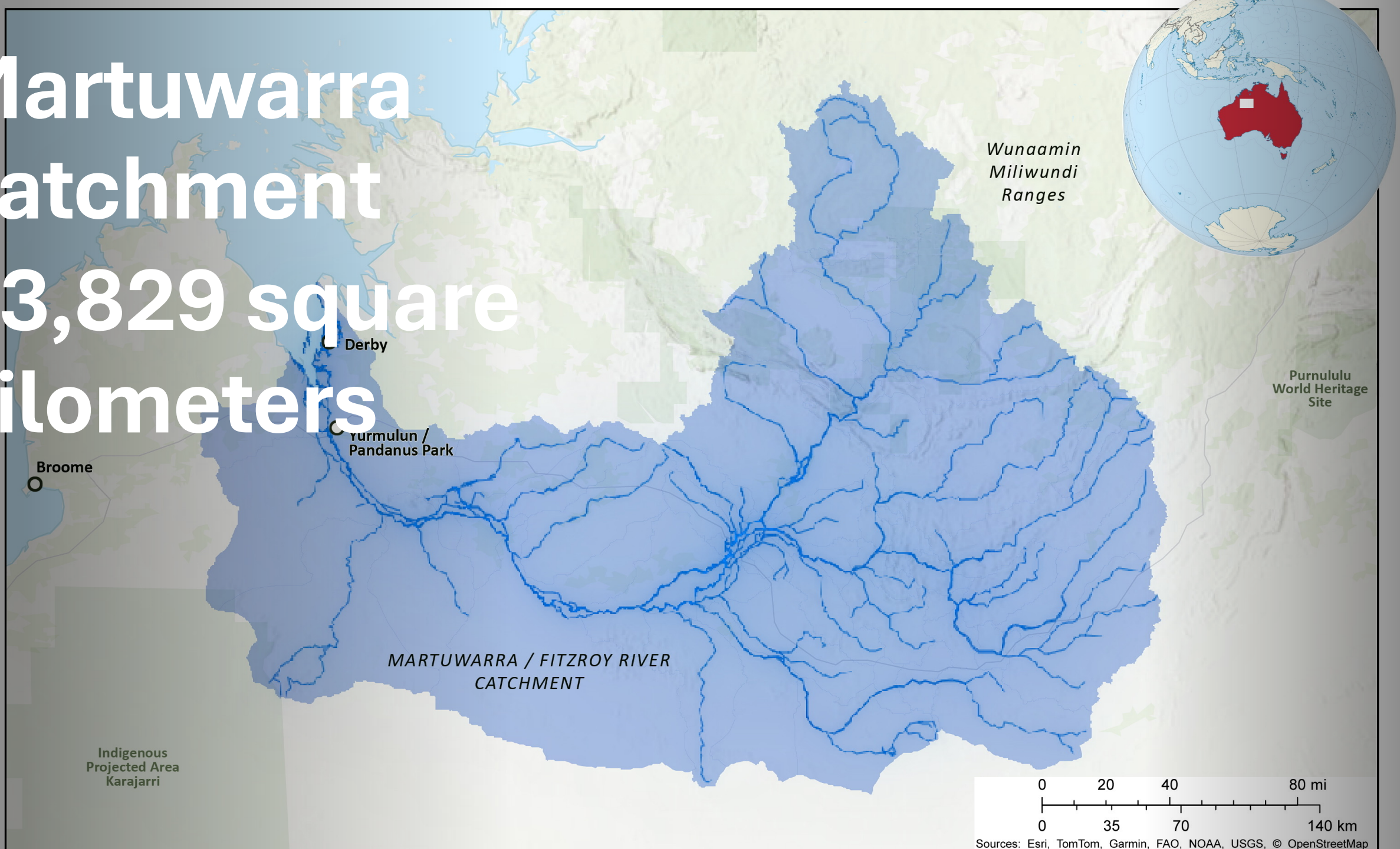
*The Role of Local Communities to Foster Innovation  
through Traditional Knowledge and Ancient Hydro-  
Technologies (AHTs)*



**MARTUWARRA  
FITZROY RIVER COUNCIL**

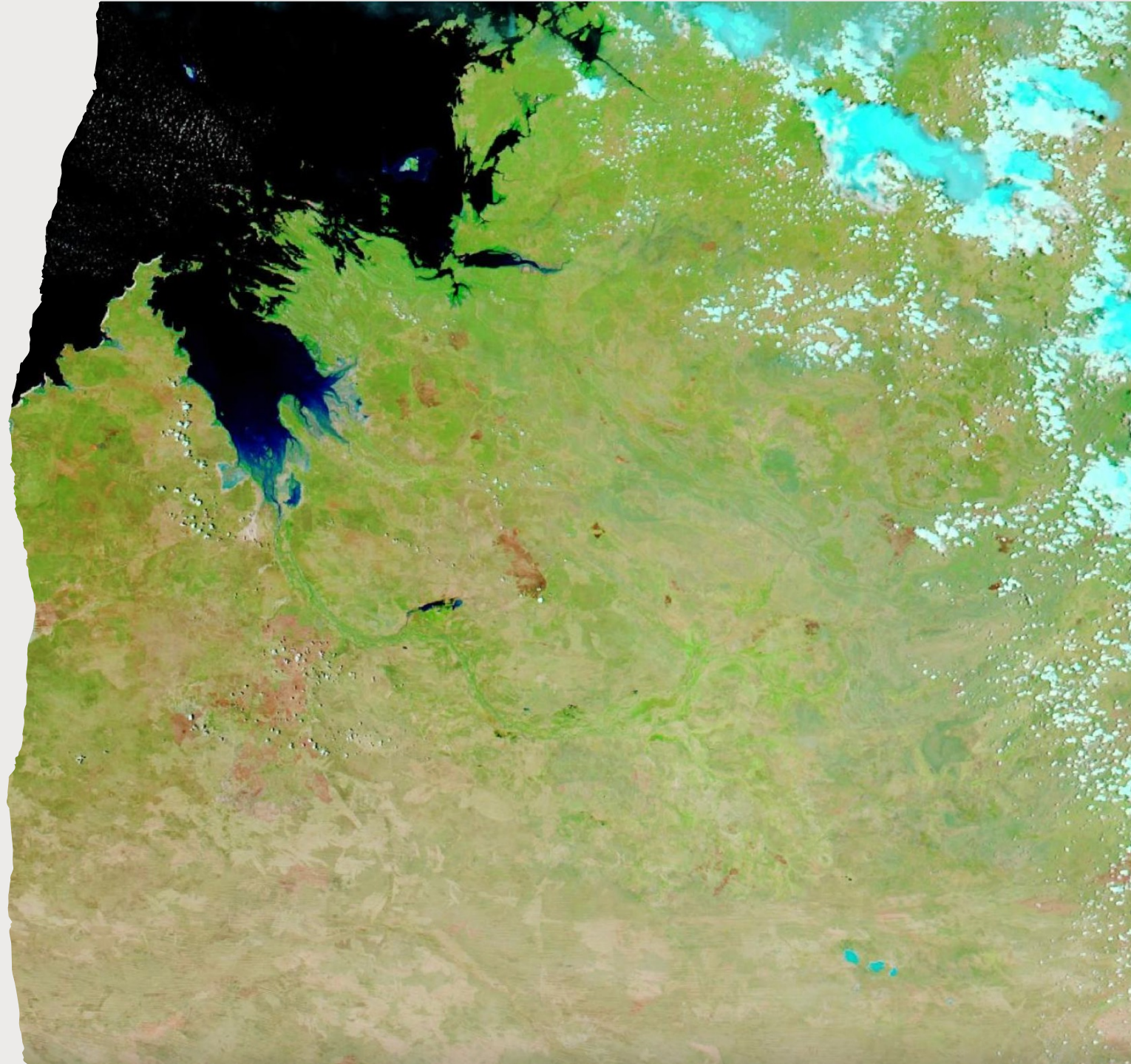


# Martuwarra catchment 93,829 square kilometers



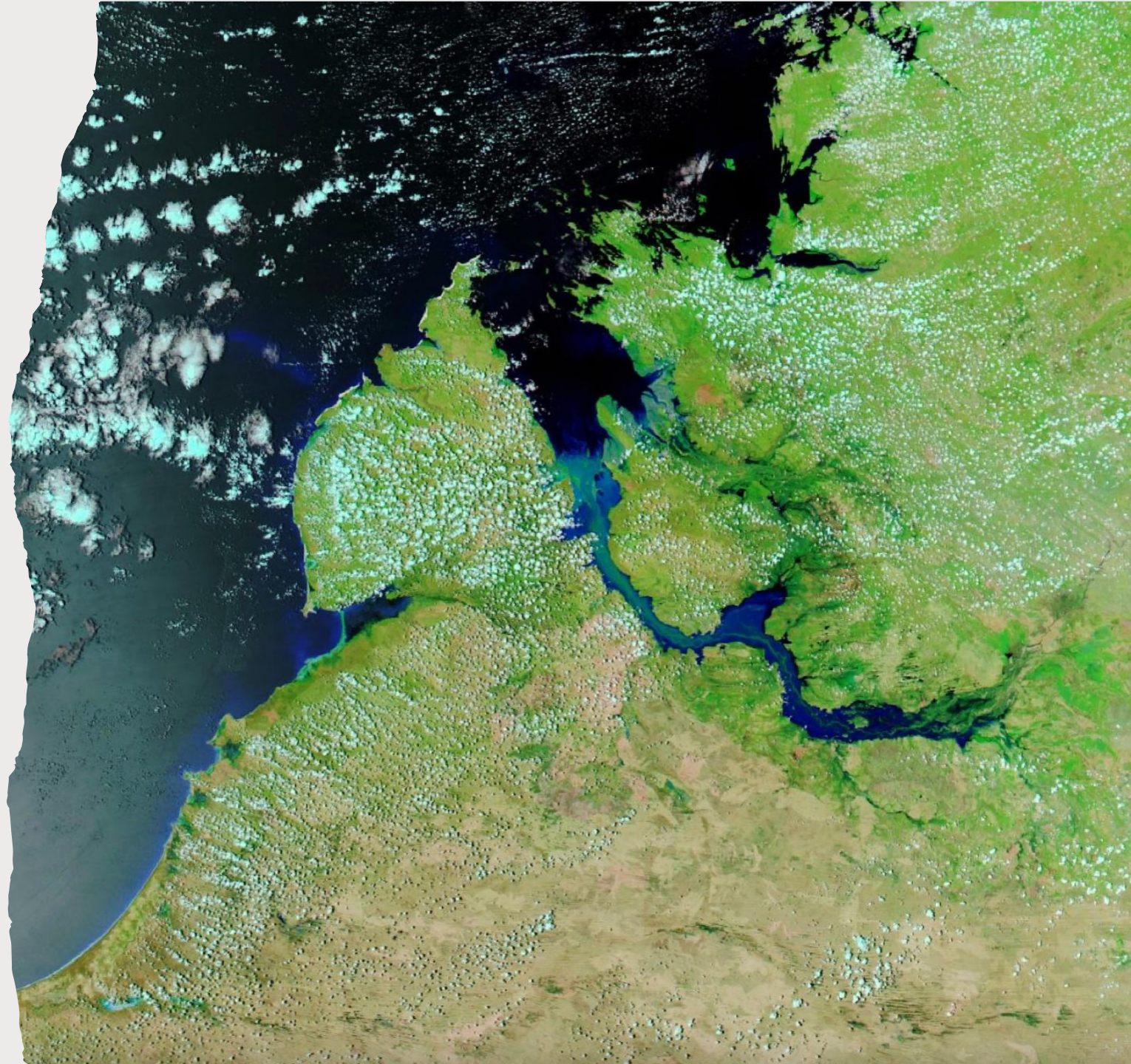


# Ephemeral River System





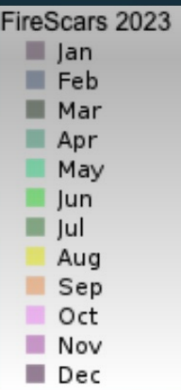
**The estimated  
flow rate of  
Martuwarra in  
flood January  
2023  
was  
approximately  
60,000 cubic  
meters per  
second**





# Most fire prone landscape on Earth

## Burnt area in the Kimberley 2023





# West Kimberley Traditional Owner Climate Forum 2025

